

# Hampshire Water Transfer and Water Recycling Project Environmental Statement - Figure 8.28 Habitat suitability modelling output for soprano pipistrelle

VOLUME NUMBER: 6

PLANNING INSPECTORATE SCHEME NUMBER: WA010002

APPLICATION DOCUMENT REFERENCE: 6.3

APFP REGULATION: 5(2)(a)

May 2026

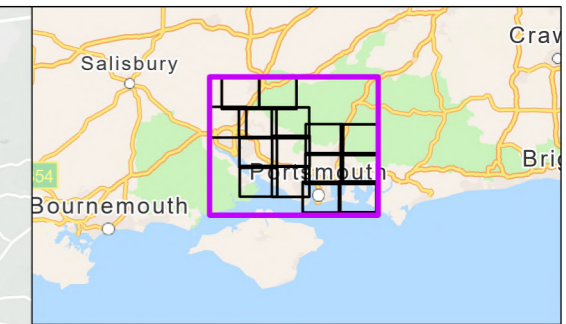
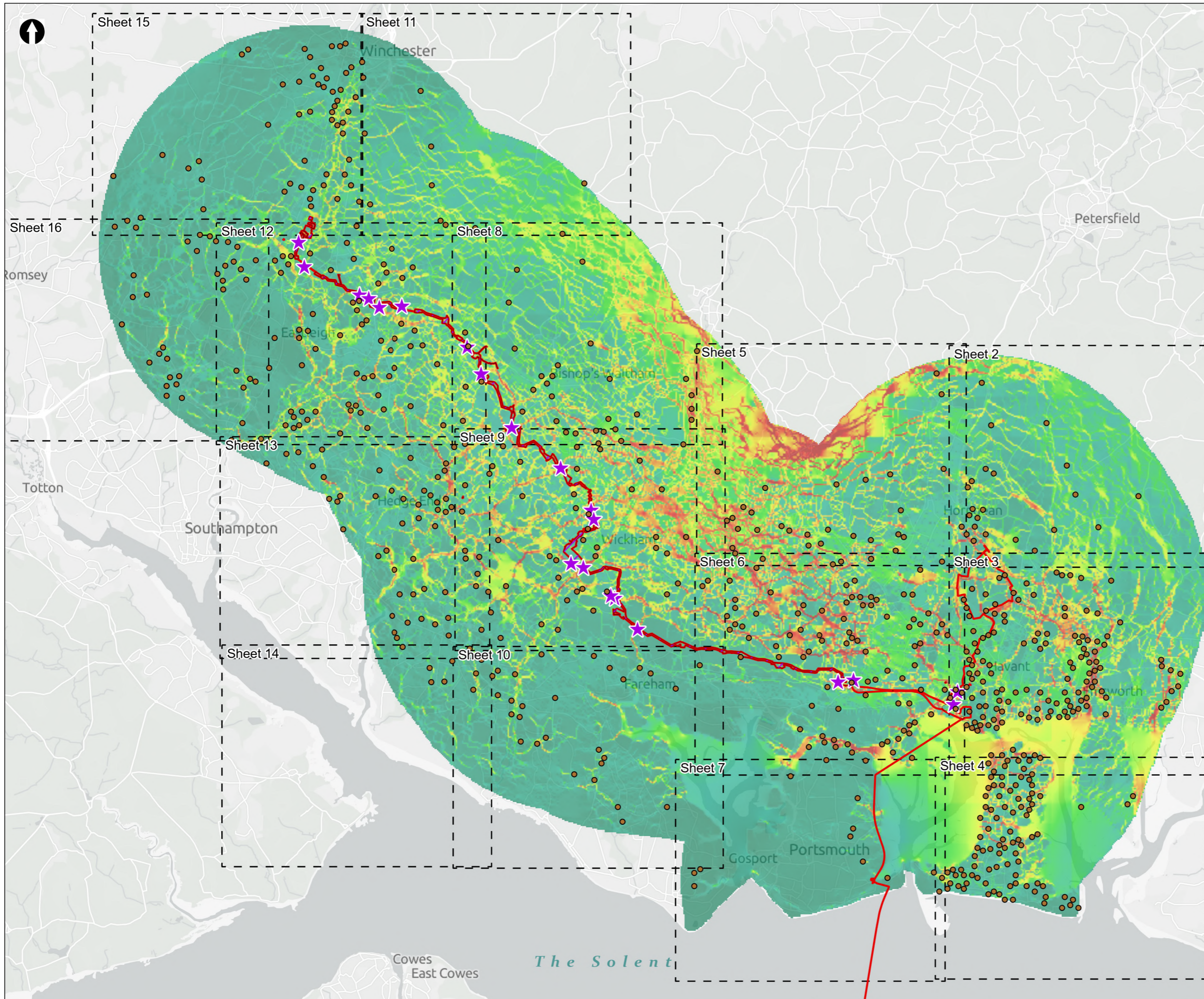
Version 0



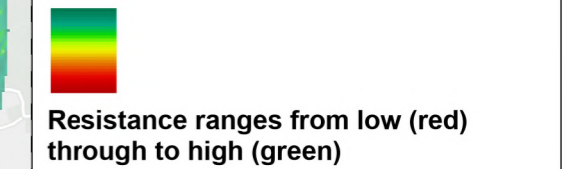
from  
**Southern  
Water** 

The Southern Water logo consists of three stylized, wavy blue lines of varying lengths, positioned to the right of the text 'Southern Water'.





- Order Limits
- Sheet Extent Boxes 1:30K
- Bat Direct Impact Zone
- Soprano pipistrelle Observed Presence Locations
- Bat Key Connective Locations



Coordinate system: British National Grid; Datum: OSGB 1936  
 Data sources: © Crown copyright and database rights 2026 Ordnance Survey 0100031673. Sources: Esri, TomTom, Garmin, FAO, NOAA, USGS, © OpenStreetMap contributors, and the GIS User Community, Contains OS data © Crown Copyright and database right 2026. Contains data from OS Zoomstack

PROJECT TITLE  
 Hampshire Water Transfer and Water Recycling Project

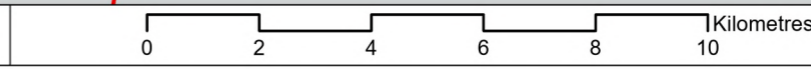


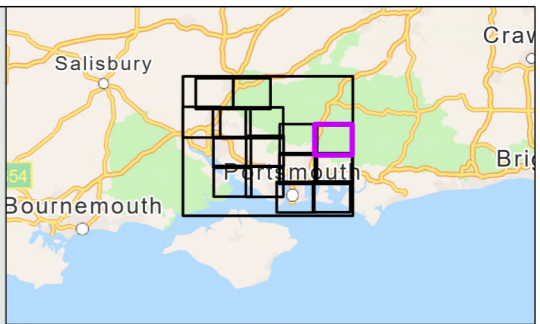
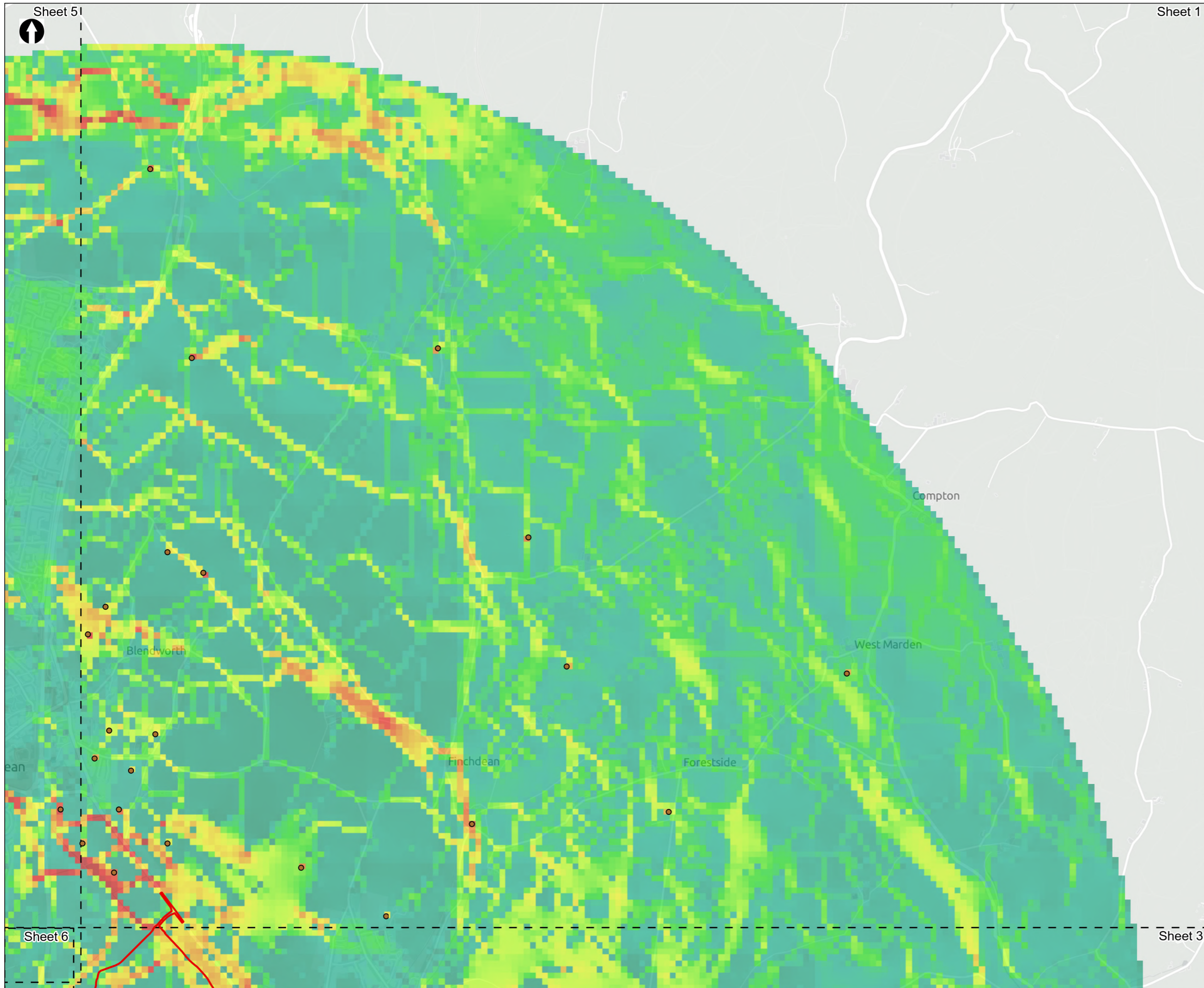
Figure 8.28  
 Habitat suitability modelling output for soprano pipistrelle  
 Sheet 1 of 16

Drawn <b>MW</b>	GIS Checked <b>DL</b>	Checked <b>MP</b>	Approved <b>AK</b>
Scale at A3 <b>1:135,000</b>	Status <b>Final</b>	Revision <b>05</b>	Security <b>STD</b>


Drawing Number  
**PC5223-RHD-ES-ZZ-D-Z-0053**

© Southern Water 2026  
 This document is issued for the party which commissioned it and for specific purposes connected with the captioned project only. It should not be relied upon by any other party or used for any other purpose. We accept no responsibility for the consequences of this document being relied upon by any other party, or being used for any other purpose, or containing any error or omission which is due to an error or omission in data supplied to us by other parties.





- Order Limits
- Sheet Extent Boxes 1:30K
- *Soprano pipistrelle* Observed Presence Locations

 Resistance ranges from low (red) through to high (green)

Coordinate system: British National Grid; Datum: OSGB 1936  
 Data sources: © Crown copyright and database rights 2026 Ordnance Survey 0100031673. Sources: Esri, TomTom, Garmin, FAO, NOAA, USGS, © OpenStreetMap contributors, and the GIS User Community, Contains OS data © Crown Copyright and database right 2026. Contains data from OS Zoomstack

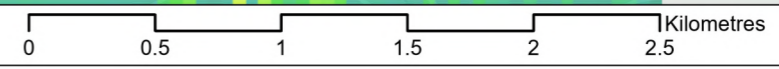
PROJECT TITLE  
 Hampshire Water Transfer and Water Recycling Project

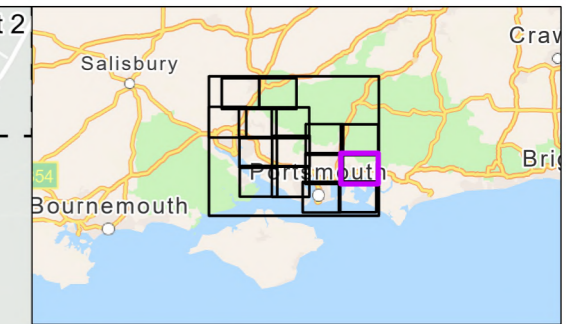
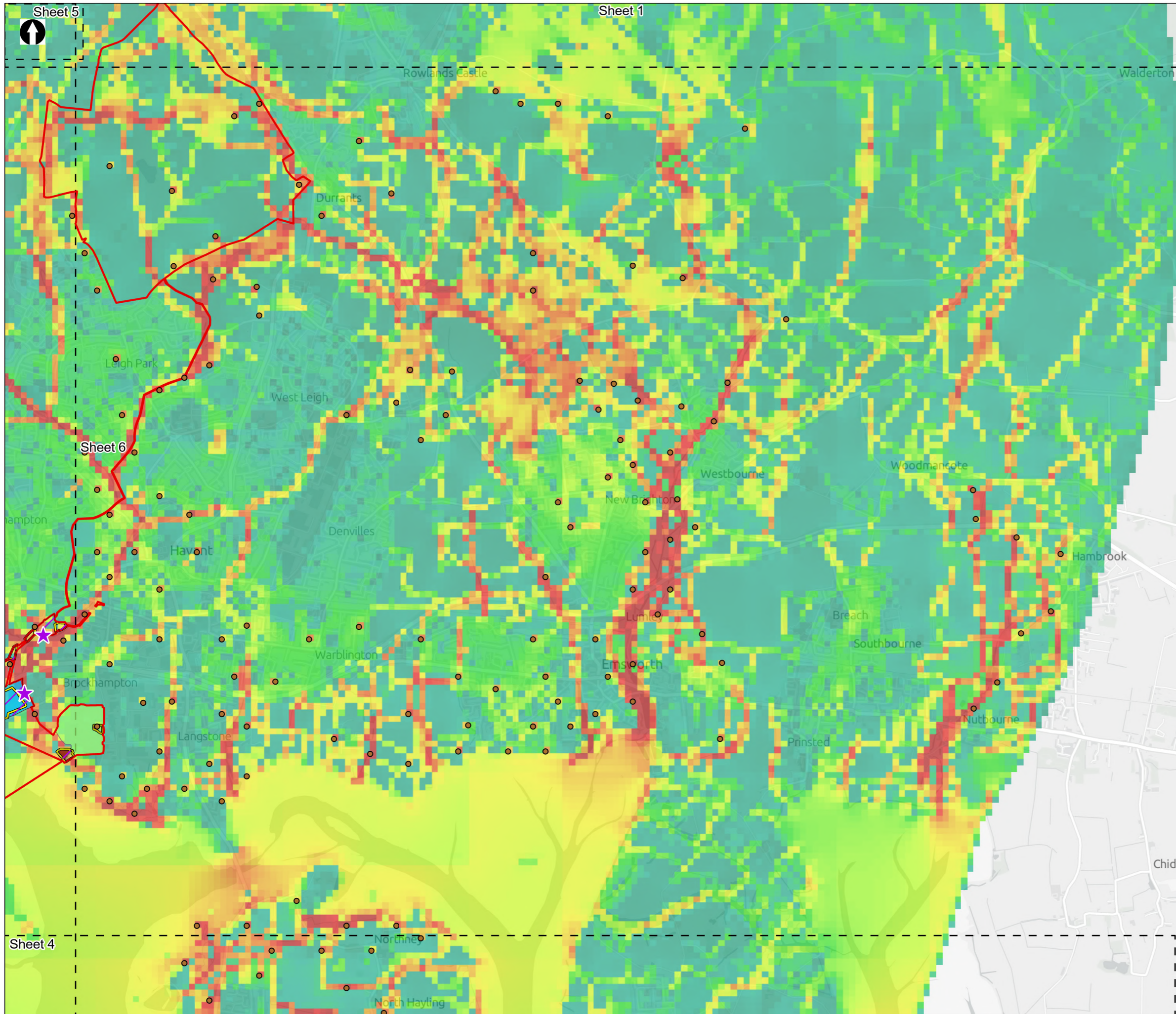


Figure 8.28  
 Habitat suitability modelling output for soprano pipistrelle  
 Sheet 2 of 16

Drawn <b>MW</b>	GIS Checked <b>DL</b>	Checked <b>MP</b>	Approved <b>AK</b>
Scale at A3 <b>1:30,000</b>	Status <b>Final</b>	Revision <b>05</b>	Security <b>STD</b>

Drawing Number  
**PC5223-RHD-ES-ZZ-D-Z-0053**





**Order Limits**  
 Sheet Extent Boxes 1:30K  
 Construction compounds  
 Bat Direct Impact Zone  
 Soprano pipistrelle Observed Presence Locations  
 Bat Key Connective Locations

**Proposed Development components**  
 Budds Farm Wastewater Treatment Works  
 Limits of Deviation for Budds Farm Pumping Station  
 Water Recycling Plant site

Resistance ranges from low (red) through to high (green)

Coordinate system: British National Grid; Datum: OSGB 1936  
 Data sources: © Crown copyright and database rights 2026 Ordnance Survey 0100031673. Sources: Esri, TomTom, Garmin, FAO, NOAA, USGS, © OpenStreetMap contributors, and the GIS User Community, Contains OS data © Crown Copyright and database right 2026. Contains data from OS Zoomstack

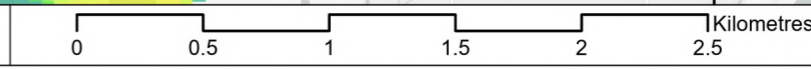
PROJECT TITLE  
 Hampshire Water Transfer and Water Recycling Project

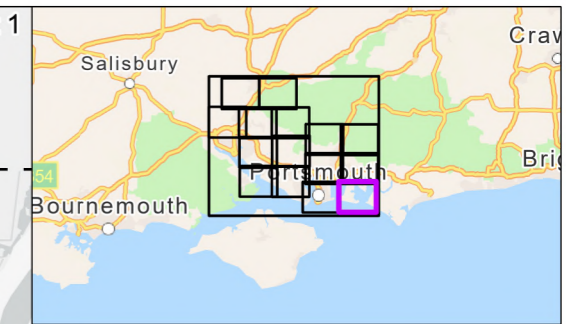
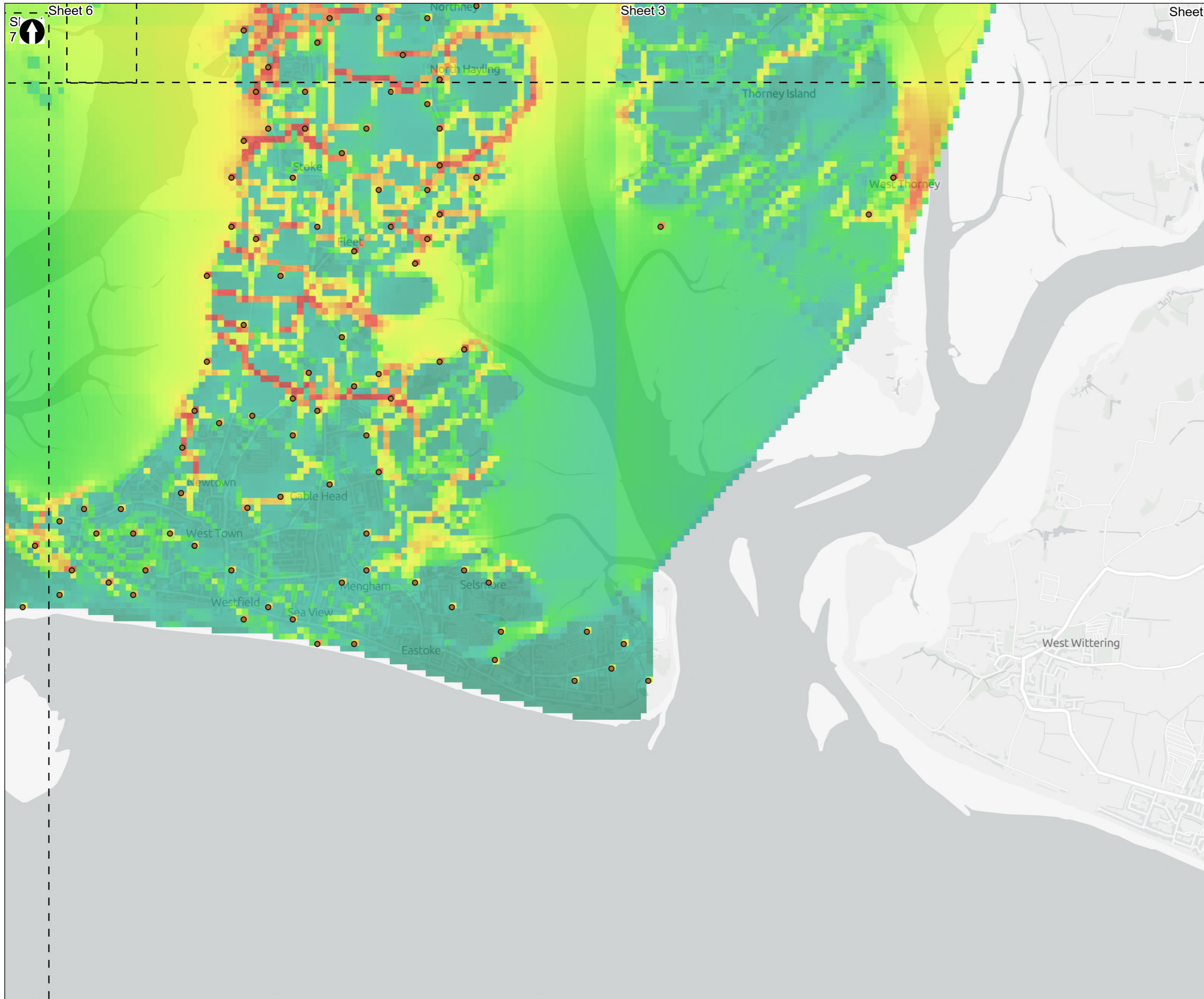


Figure 8.28  
 Habitat suitability modelling output for soprano pipistrelle  
 Sheet 3 of 16


Drawn <b>MW</b>	GIS Checked <b>DL</b>	Checked <b>MP</b>	Approved <b>AK</b>
Scale at A3 <b>1:30,000</b>	Status <b>Final</b>	Revision <b>05</b>	Security <b>STD</b>

Drawing Number  
**PC5223-RHD-ES-ZZ-D-Z-0053**





- Sheet Extent Boxes 1:30K
- *Soprano pipistrelle* Observed Presence Locations

 Resistance ranges from low (red) through to high (green)

Coordinate system: British National Grid; Datum: OSGB 1936  
 Data sources: © Crown copyright and database rights 2026 Ordnance Survey 0100031673. Sources: Esri, TomTom, Garmin, FAO, NOAA, USGS, © OpenStreetMap contributors, and the GIS User Community, Contains OS data © Crown Copyright and database right 2026. Contains data from OS Zoomstack

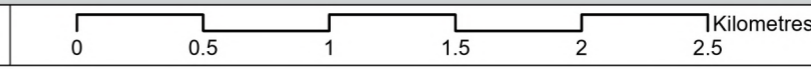
PROJECT TITLE  
 Hampshire Water Transfer and Water Recycling Project

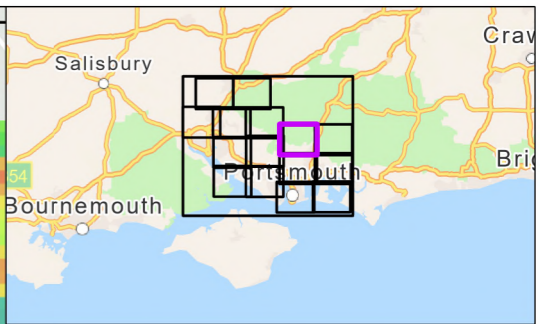
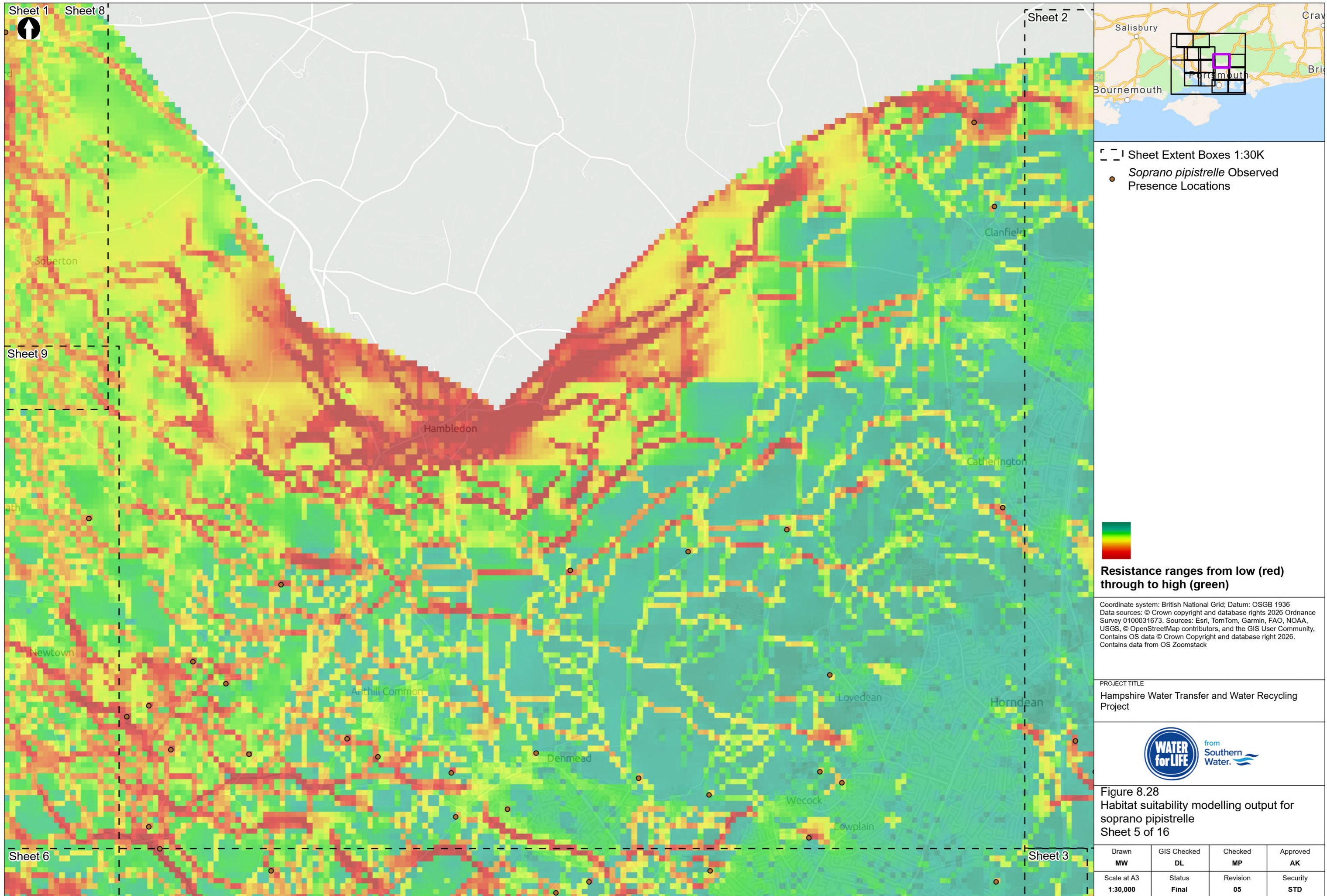


Figure 8.28  
 Habitat suitability modelling output for soprano pipistrelle  
 Sheet 4 of 16

Drawn <b>MW</b>	GIS Checked <b>DL</b>	Checked <b>MP</b>	Approved <b>AK</b>
Scale at A3 <b>1:30,000</b>	Status <b>Final</b>	Revision <b>05</b>	Security <b>STD</b>

Drawing Number  
**PC5223-RHD-ES-ZZ-D-Z-0053**





Sheet Extent Boxes 1:30K  
 ● Soprano pipistrelle Observed Presence Locations

**Resistance ranges from low (red) through to high (green)**

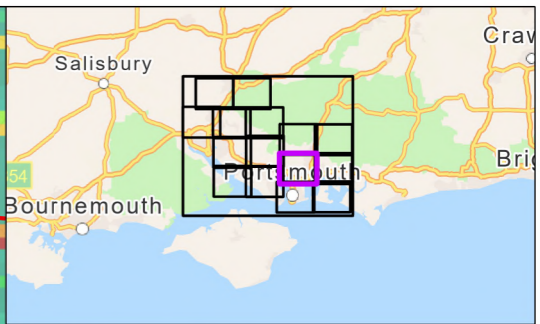
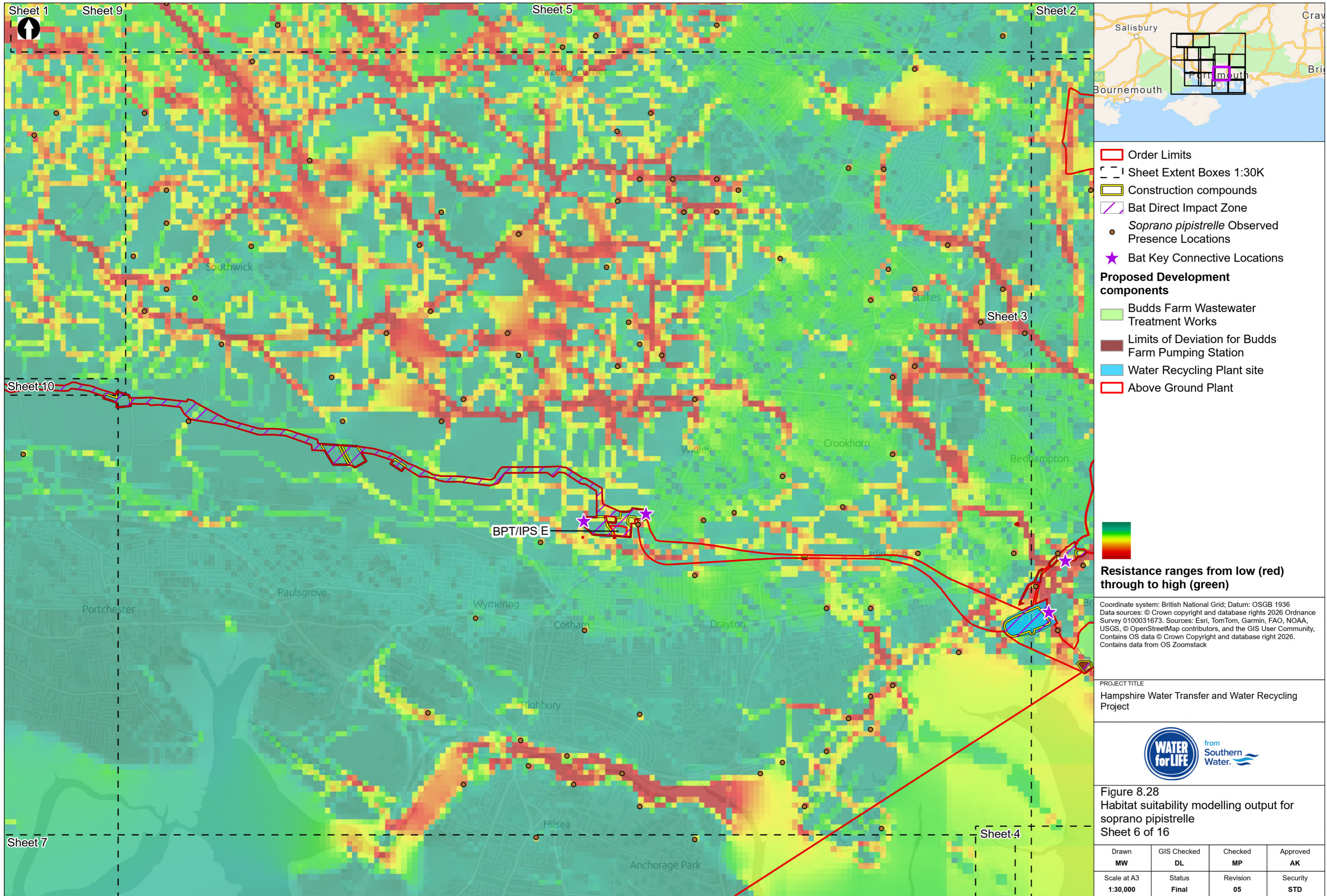
Coordinate system: British National Grid; Datum: OSGB 1936  
 Data sources: © Crown copyright and database rights 2026 Ordnance Survey 0100031673. Sources: Esri, TomTom, Garmin, FAO, NOAA, USGS, © OpenStreetMap contributors, and the GIS User Community, Contains OS data © Crown Copyright and database right 2026. Contains data from OS Zoomstack

PROJECT TITLE  
 Hampshire Water Transfer and Water Recycling Project



Figure 8.28  
 Habitat suitability modelling output for soprano pipistrelle  
 Sheet 5 of 16

Drawn <b>MW</b>	GIS Checked <b>DL</b>	Checked <b>MP</b>	Approved <b>AK</b>
Scale at A3 <b>1:30,000</b>	Status <b>Final</b>	Revision <b>05</b>	Security <b>STD</b>



- Order Limits
  - Sheet Extent Boxes 1:30K
  - Construction compounds
  - Bat Direct Impact Zone
  - Soprano pipistrelle* Observed Presence Locations
  - Bat Key Connective Locations
- Proposed Development components**
- Budds Farm Wastewater Treatment Works
  - Limits of Deviation for Budds Farm Pumping Station
  - Water Recycling Plant site
  - Above Ground Plant
- Resistance ranges from low (red) through to high (green)

Coordinate system: British National Grid; Datum: OSGB 1936  
 Data sources: © Crown copyright and database rights 2026 Ordnance Survey 0100031673. Sources: Esri, TomTom, Garmin, FAO, NOAA, USGS, © OpenStreetMap contributors, and the GIS User Community, Contains OS data © Crown Copyright and database right 2026. Contains data from OS Zoomstack

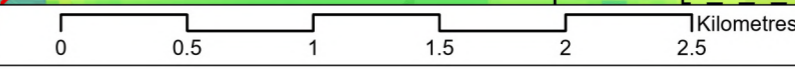
PROJECT TITLE  
 Hampshire Water Transfer and Water Recycling Project



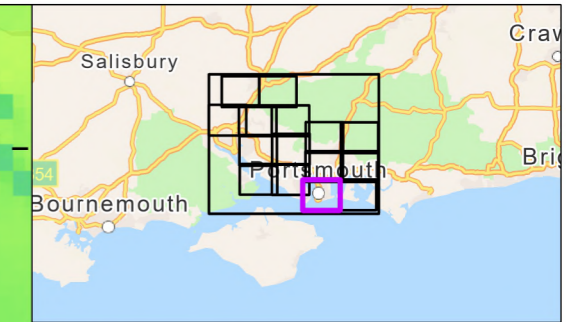
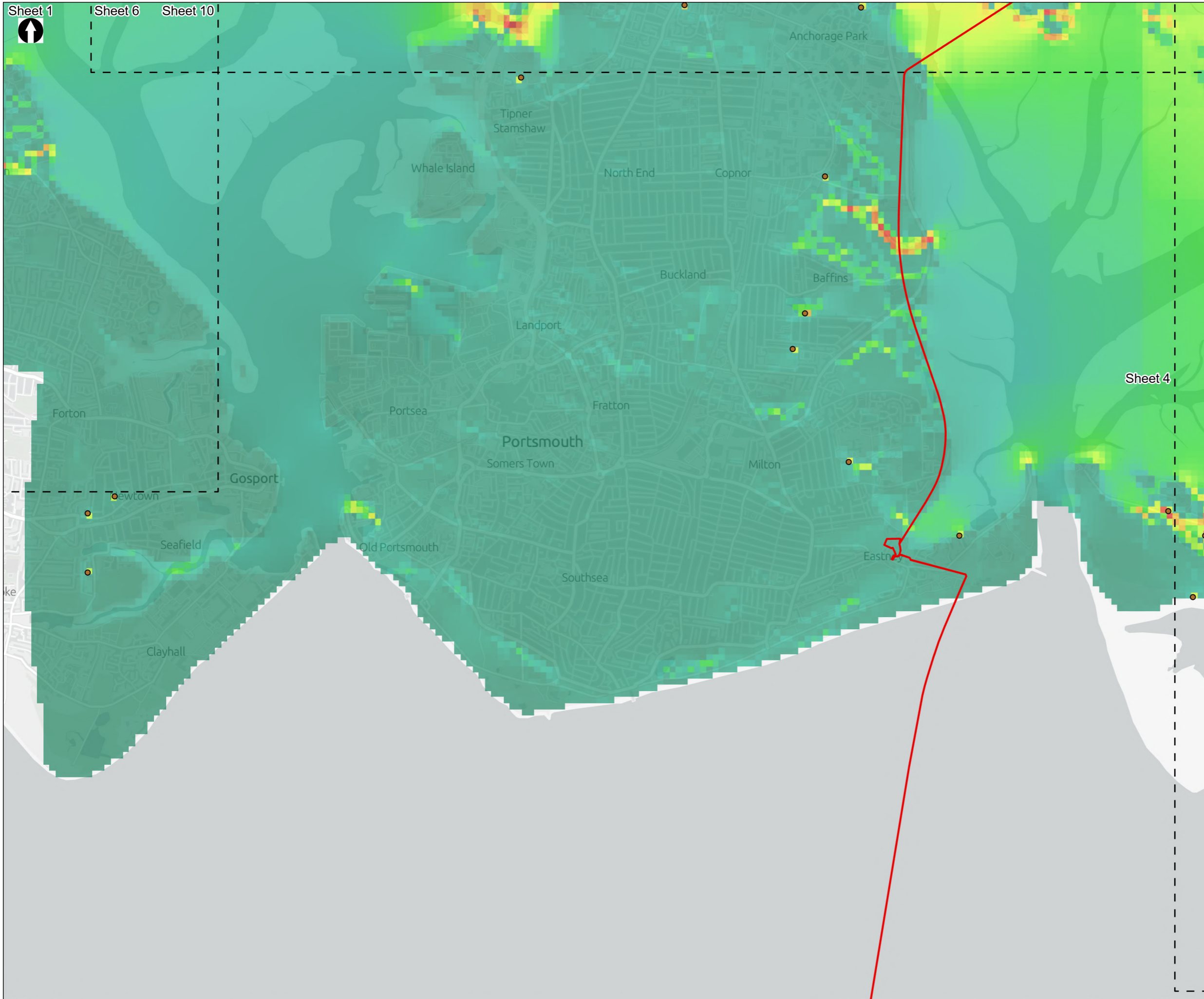
Figure 8.28  
 Habitat suitability modelling output for soprano pipistrelle  
 Sheet 6 of 16

Drawn <b>MW</b>	GIS Checked <b>DL</b>	Checked <b>MP</b>	Approved <b>AK</b>
Scale at A3 <b>1:30,000</b>	Status <b>Final</b>	Revision <b>05</b>	Security <b>STD</b>


© Southern Water 2026  
 This document is issued for the party which commissioned it and for specific purposes connected with the captioned project only. It should not be relied upon by any other party or used for any other purpose. We accept no responsibility for the consequences of this document being relied upon by any other party, or being used for any other purpose, or containing any error or omission which is due to an error or omission in data supplied to us by other parties.



Drawing Number  
**PC5223-RHD-ES-ZZ-D-Z-0053**



- Order Limits
- Sheet Extent Boxes 1:30K
- *Soprano pipistrelle* Observed Presence Locations

 Resistance ranges from low (red) through to high (green)

Coordinate system: British National Grid; Datum: OSGB 1936  
 Data sources: © Crown copyright and database rights 2026 Ordnance Survey 0100031673. Sources: Esri, TomTom, Garmin, FAO, NOAA, USGS, © OpenStreetMap contributors, and the GIS User Community, Contains OS data © Crown Copyright and database right 2026. Contains data from OS Zoomstack

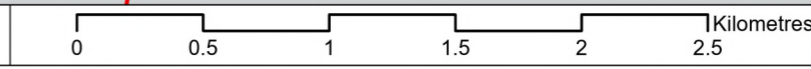
PROJECT TITLE  
 Hampshire Water Transfer and Water Recycling Project

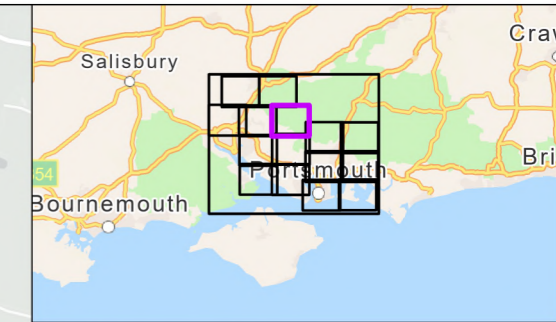
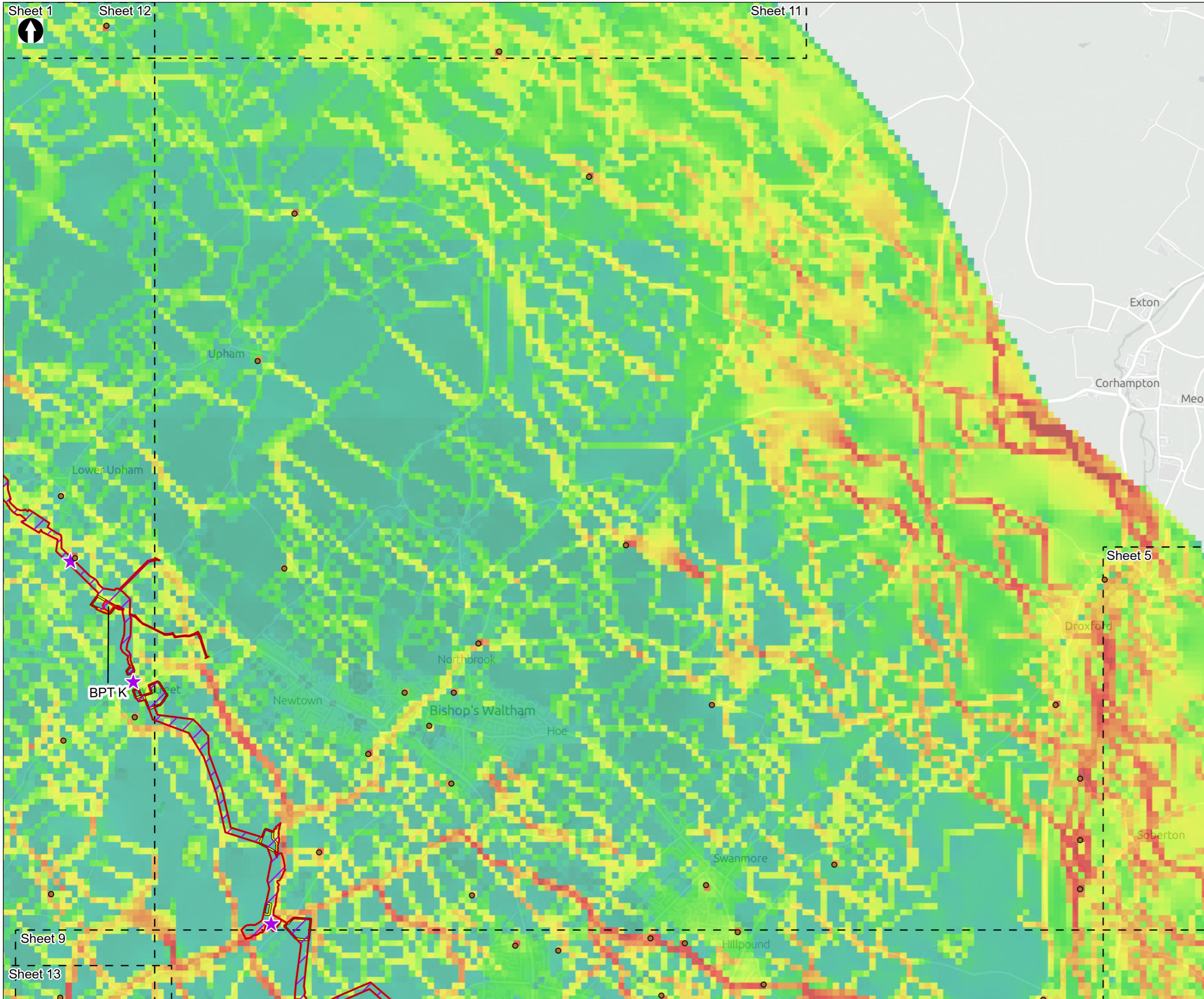


Figure 8.28  
 Habitat suitability modelling output for soprano pipistrelle  
 Sheet 7 of 16

Drawn <b>MW</b>	GIS Checked <b>DL</b>	Checked <b>MP</b>	Approved <b>AK</b>
Scale at A3 <b>1:30,000</b>	Status <b>Final</b>	Revision <b>05</b>	Security <b>STD</b>

Drawing Number  
**PC5223-RHD-ES-ZZ-D-Z-0053**





- Order Limits
- Sheet Extent Boxes 1:30K
- Construction compounds
- Bat Direct Impact Zone
- Soprano pipistrelle* Observed Presence Locations
- Bat Key Connective Locations
- Above Ground Plant

Resistance ranges from low (red) through to high (green)

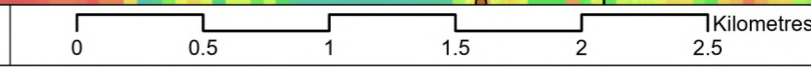
Coordinate system: British National Grid; Datum: OSGB 1936  
 Data sources: © Crown copyright and database rights 2026 Ordnance Survey 0100031673. Sources: Esri, TomTom, Garmin, FAO, NOAA, USGS, © OpenStreetMap contributors, and the GIS User Community, Contains OS data © Crown Copyright and database right 2026. Contains data from OS Zoomstack

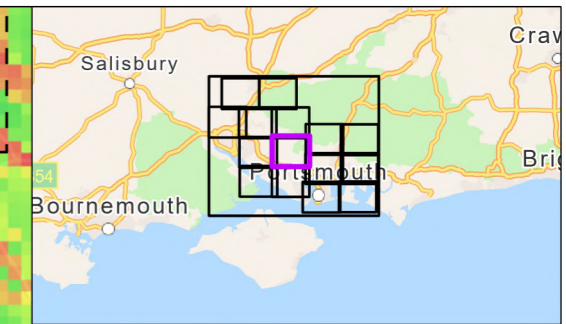
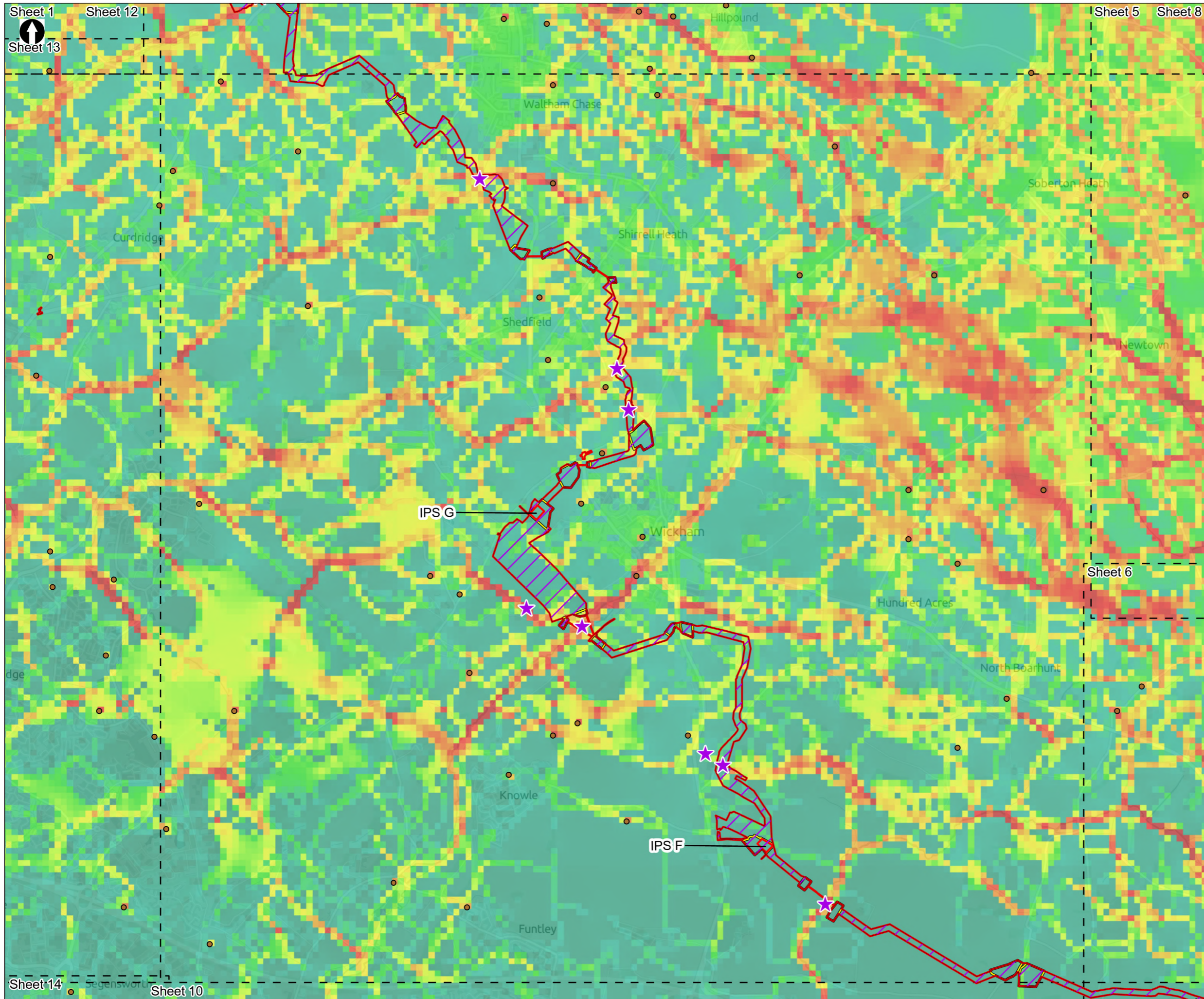
PROJECT TITLE  
 Hampshire Water Transfer and Water Recycling Project



Figure 8.28  
 Habitat suitability modelling output for soprano pipistrelle  
 Sheet 8 of 16

Drawn <b>MW</b>	GIS Checked <b>DL</b>	Checked <b>MP</b>	Approved <b>AK</b>
Scale at A3 <b>1:30,000</b>	Status <b>Final</b>	Revision <b>05</b>	Security <b>STD</b>





- Order Limits
- Sheet Extent Boxes 1:30K
- Construction compounds
- Bat Direct Impact Zone
- Soprano pipistrelle* Observed Presence Locations
- ★ Bat Key Connective Locations
- Above Ground Plant

 Resistance ranges from low (red) through to high (green)

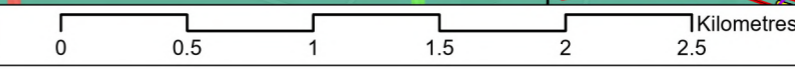
Coordinate system: British National Grid; Datum: OSGB 1936  
 Data sources: © Crown copyright and database rights 2026 Ordnance Survey 0100031673. Sources: Esri, TomTom, Garmin, FAO, NOAA, USGS, © OpenStreetMap contributors, and the GIS User Community, Contains OS data © Crown Copyright and database right 2026. Contains data from OS Zoomstack

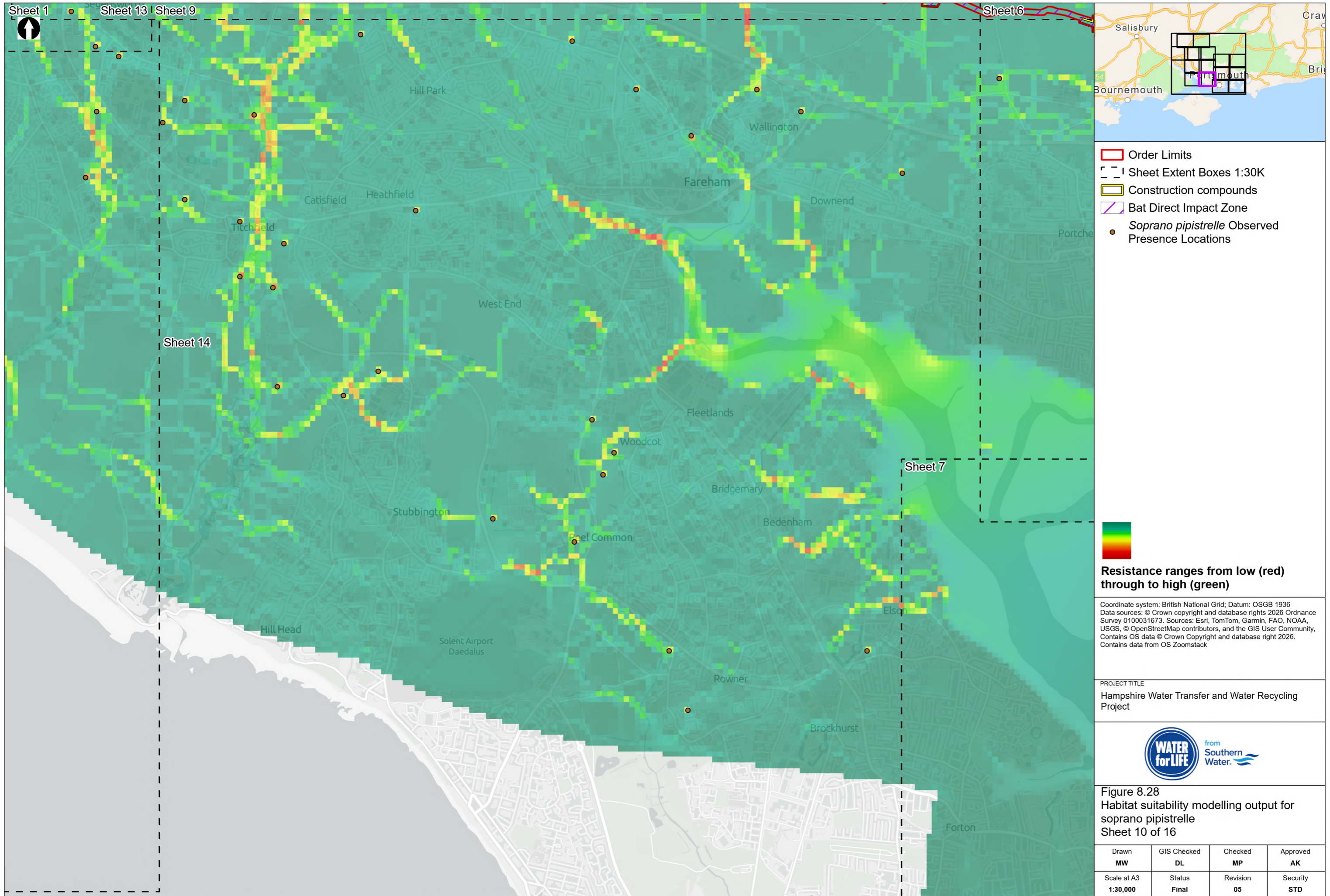
PROJECT TITLE  
 Hampshire Water Transfer and Water Recycling Project




Figure 8.28  
 Habitat suitability modelling output for soprano pipistrelle  
 Sheet 9 of 16

Drawn <b>MW</b>	GIS Checked <b>DL</b>	Checked <b>MP</b>	Approved <b>AK</b>
Scale at A3 <b>1:30,000</b>	Status <b>Final</b>	Revision <b>05</b>	Security <b>STD</b>





- Order Limits
- Sheet Extent Boxes 1:30K
- Construction compounds
- Bat Direct Impact Zone
- Soprano pipistrelle Observed Presence Locations

 Resistance ranges from low (red) through to high (green)

Coordinate system: British National Grid; Datum: OSGB 1936  
 Data sources: © Crown copyright and database rights 2026 Ordnance Survey 0100031673. Sources: Esri, TomTom, Garmin, FAO, NOAA, USGS, © OpenStreetMap contributors, and the GIS User Community, Contains OS data © Crown Copyright and database right 2026. Contains data from OS Zoomstack

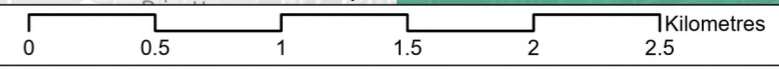
PROJECT TITLE  
 Hampshire Water Transfer and Water Recycling Project

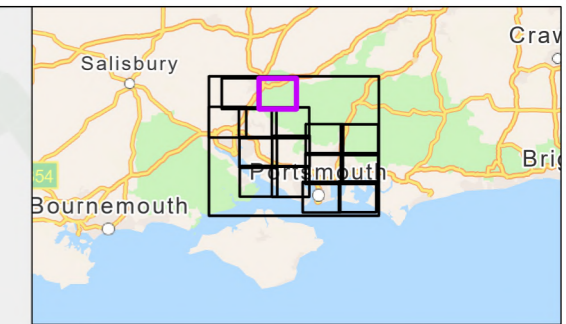
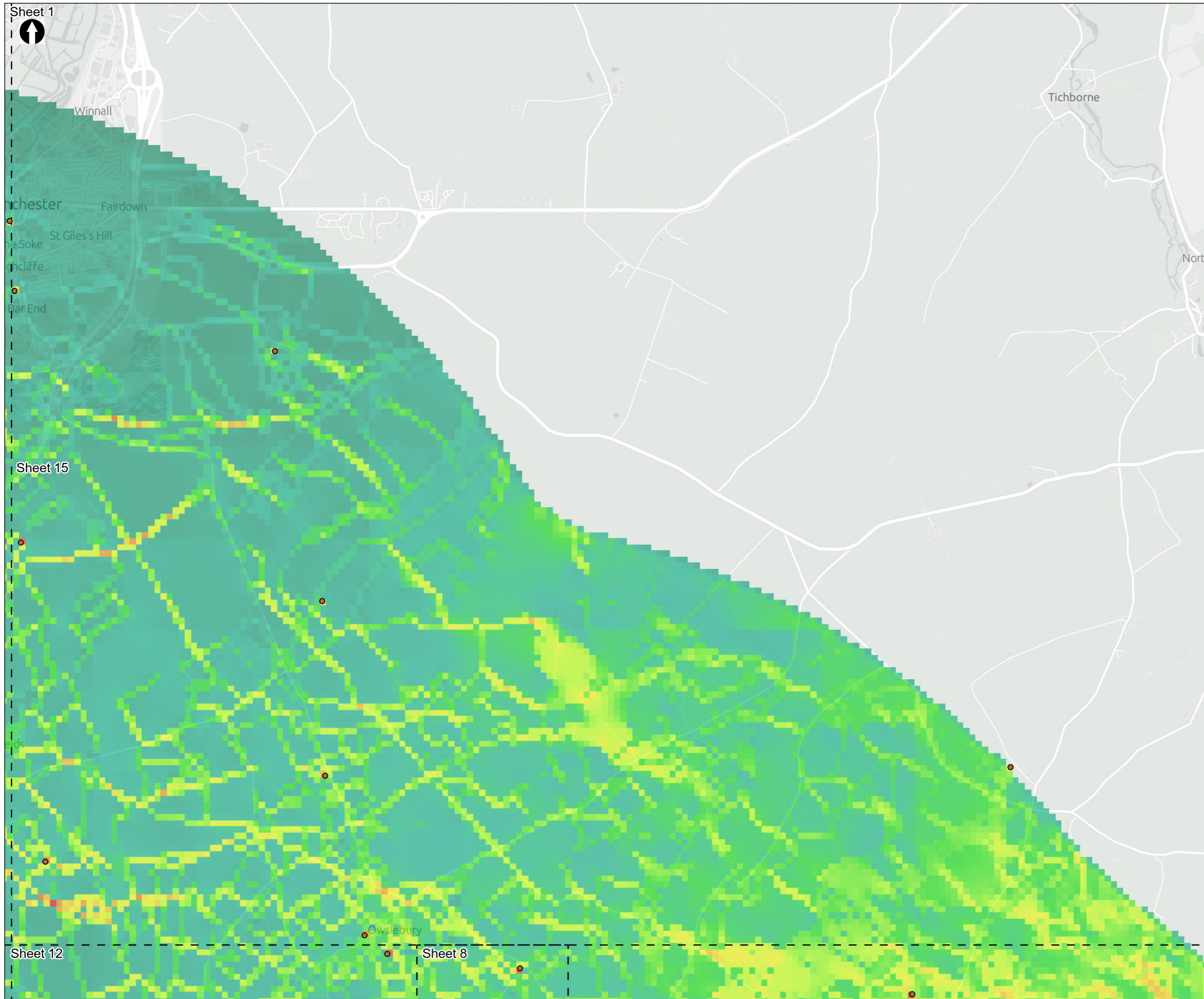


Figure 8.28  
 Habitat suitability modelling output for soprano pipistrelle  
 Sheet 10 of 16

Drawn <b>MW</b>	GIS Checked <b>DL</b>	Checked <b>MP</b>	Approved <b>AK</b>
Scale at A3 <b>1:30,000</b>	Status <b>Final</b>	Revision <b>05</b>	Security <b>STD</b>

Drawing Number  
**PC5223-RHD-ES-ZZ-D-Z-0053**





Sheet Extent Boxes 1:30K

- Soprano pipistrelle Observed Presence Locations

Resistance ranges from low (red) through to high (green)

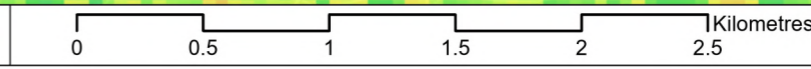
Coordinate system: British National Grid; Datum: OSGB 1936  
 Data sources: © Crown copyright and database rights 2026 Ordnance Survey 0100031673. Sources: Esri, TomTom, Garmin, FAO, NOAA, USGS, © OpenStreetMap contributors, and the GIS User Community, Contains OS data © Crown Copyright and database right 2026. Contains data from OS Zoomstack

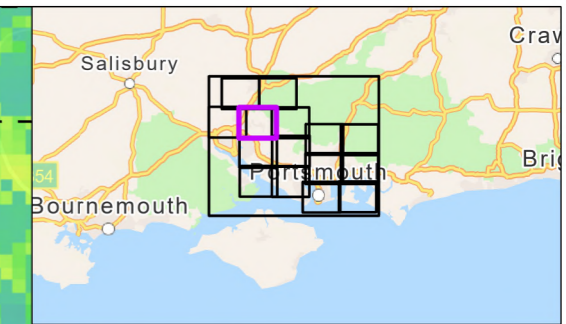
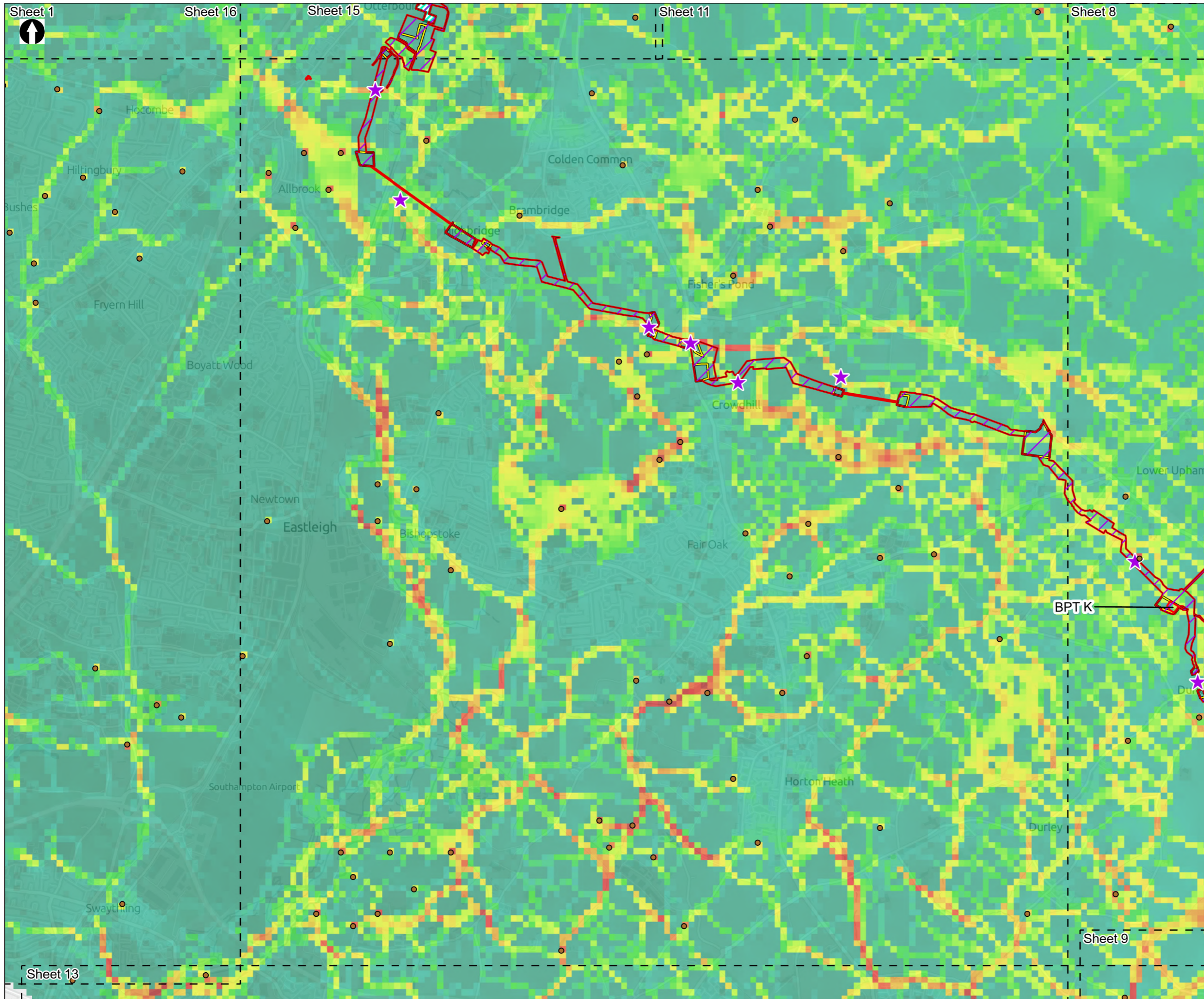
PROJECT TITLE  
 Hampshire Water Transfer and Water Recycling Project



Figure 8.28  
 Habitat suitability modelling output for soprano pipistrelle  
 Sheet 11 of 16

Drawn MW	GIS Checked DL	Checked MP	Approved AK
Scale at A3 1:30,000	Status Final	Revision 05	Security STD





- Order Limits
- Sheet Extent Boxes 1:30K
- Construction compounds
- Limits of Deviation for Otterbourne INNS Treatment Plant
- Bat Direct Impact Zone
- Soprano pipistrelle Observed Presence Locations
- ★ Bat Key Connective Locations
- Above Ground Plant

**Resistance ranges from low (red) through to high (green)**

Coordinate system: British National Grid; Datum: OSGB 1936  
 Data sources: © Crown copyright and database rights 2026 Ordnance Survey 0100031673. Sources: Esri, TomTom, Garmin, FAO, NOAA, USGS, © OpenStreetMap contributors, and the GIS User Community, Contains OS data © Crown Copyright and database right 2026. Contains data from OS Zoomstack

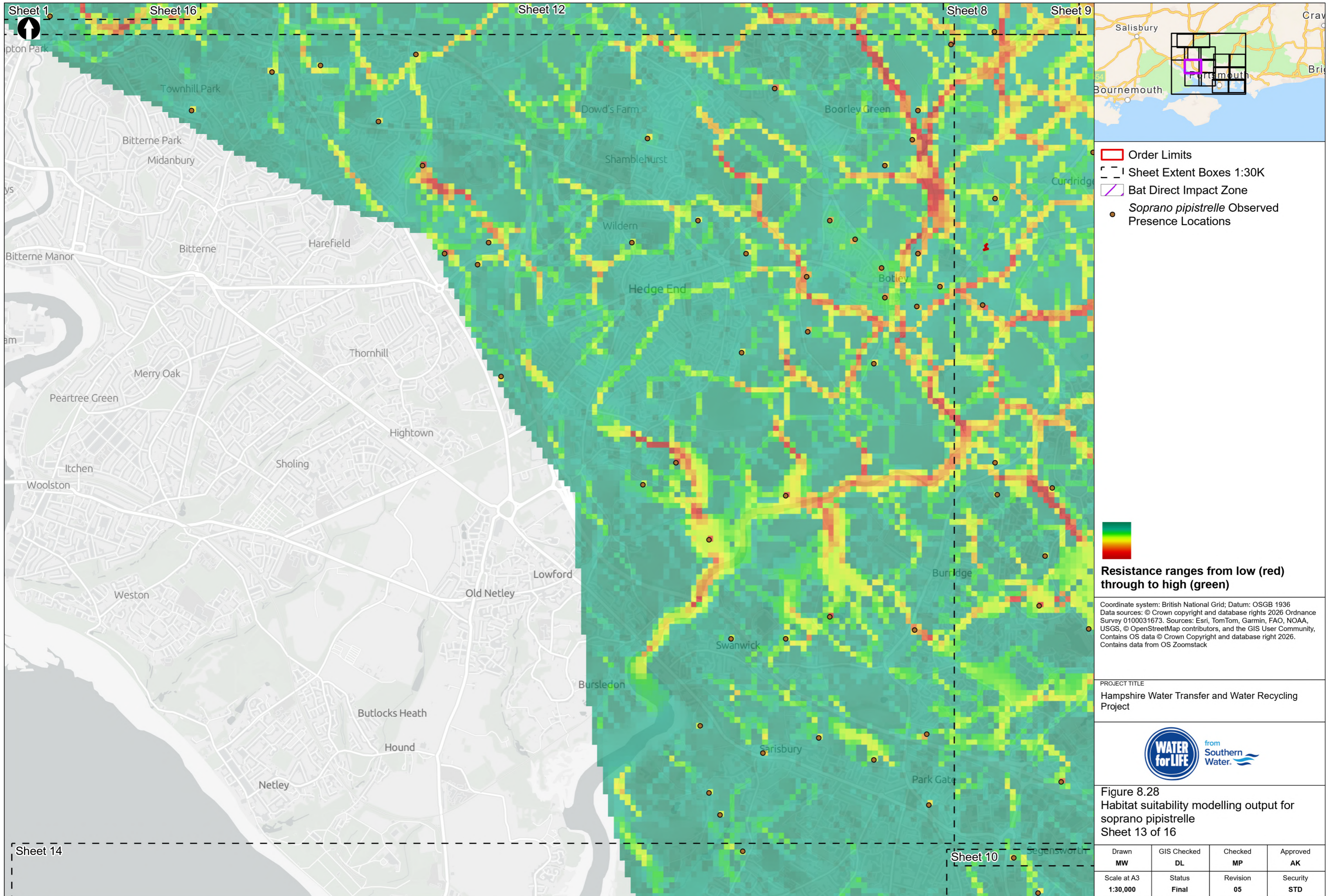
PROJECT TITLE  
 Hampshire Water Transfer and Water Recycling Project




Figure 8.28  
 Habitat suitability modelling output for soprano pipistrelle  
 Sheet 12 of 16

Drawn <b>MW</b>	GIS Checked <b>DL</b>	Checked <b>MP</b>	Approved <b>AK</b>
Scale at A3 <b>1:30,000</b>	Status <b>Final</b>	Revision <b>05</b>	Security <b>STD</b>





- Order Limits
- Sheet Extent Boxes 1:30K
- Bat Direct Impact Zone
- Soprano pipistrelle Observed Presence Locations

 Resistance ranges from low (red) through to high (green)

Coordinate system: British National Grid; Datum: OSGB 1936  
 Data sources: © Crown copyright and database rights 2026 Ordnance Survey 0100031673. Sources: Esri, TomTom, Garmin, FAO, NOAA, USGS, © OpenStreetMap contributors, and the GIS User Community, Contains OS data © Crown Copyright and database right 2026. Contains data from OS Zoomstack

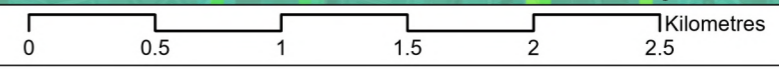
PROJECT TITLE  
 Hampshire Water Transfer and Water Recycling Project

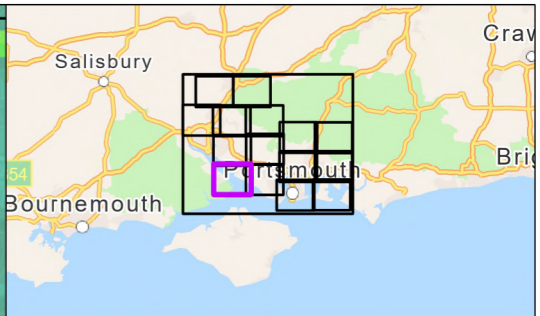
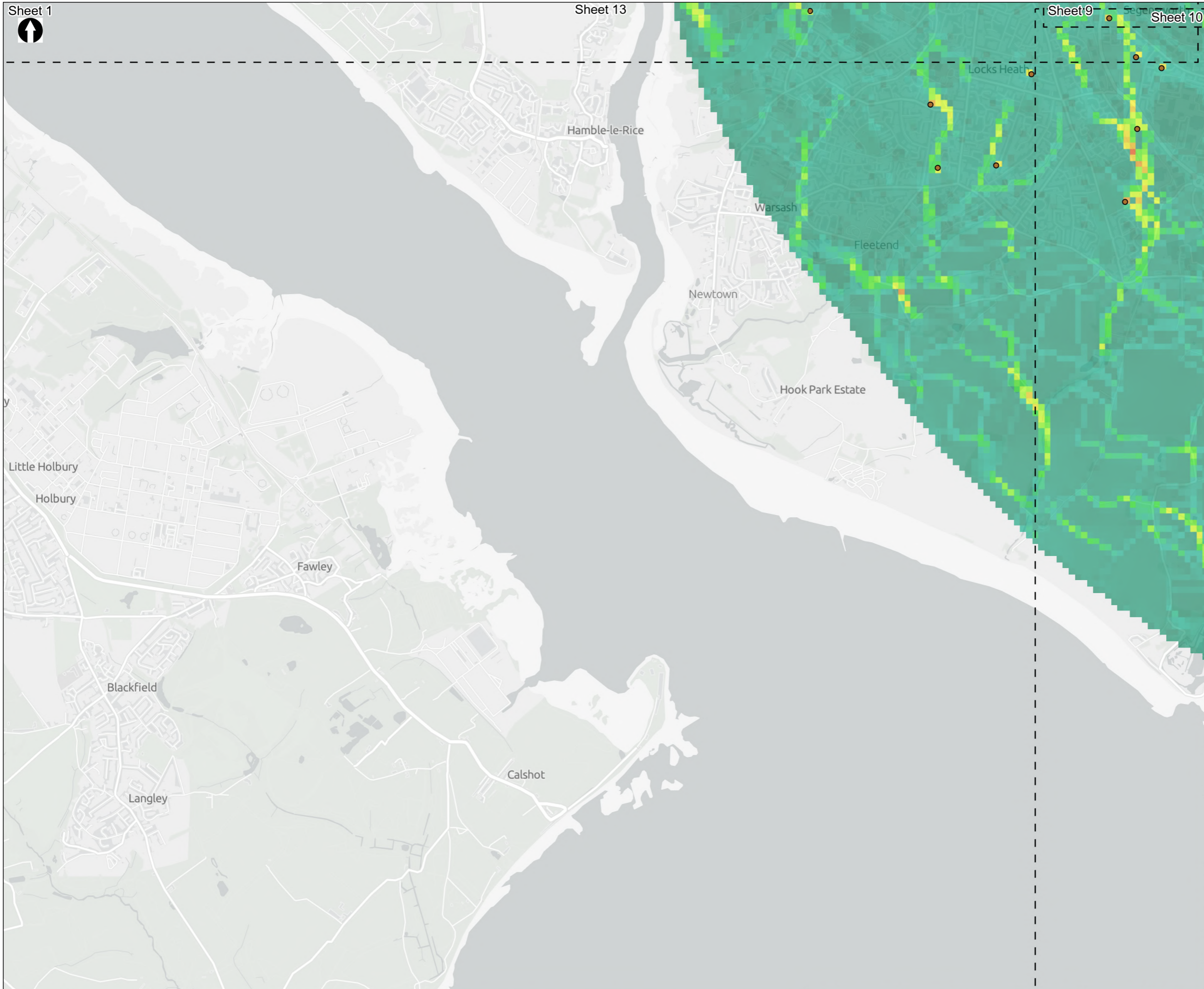


Figure 8.28  
 Habitat suitability modelling output for soprano pipistrelle  
 Sheet 13 of 16

Drawn <b>MW</b>	GIS Checked <b>DL</b>	Checked <b>MP</b>	Approved <b>AK</b>
Scale at A3 <b>1:30,000</b>	Status <b>Final</b>	Revision <b>05</b>	Security <b>STD</b>

Drawing Number  
**PC5223-RHD-ES-ZZ-D-Z-0053**





Sheet Extent Boxes 1:30K

- Soprano pipistrelle Observed Presence Locations



Resistance ranges from low (red) through to high (green)

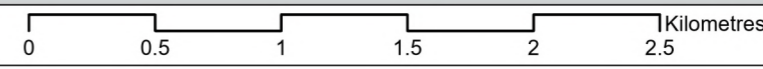
Coordinate system: British National Grid; Datum: OSGB 1936  
 Data sources: © Crown copyright and database rights 2026 Ordnance Survey 0100031673. Sources: Esri, TomTom, Garmin, FAO, NOAA, USGS, © OpenStreetMap contributors, and the GIS User Community, Contains OS data © Crown Copyright and database right 2026. Contains data from OS Zoomstack

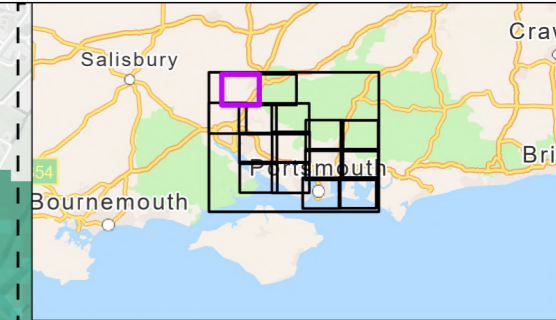
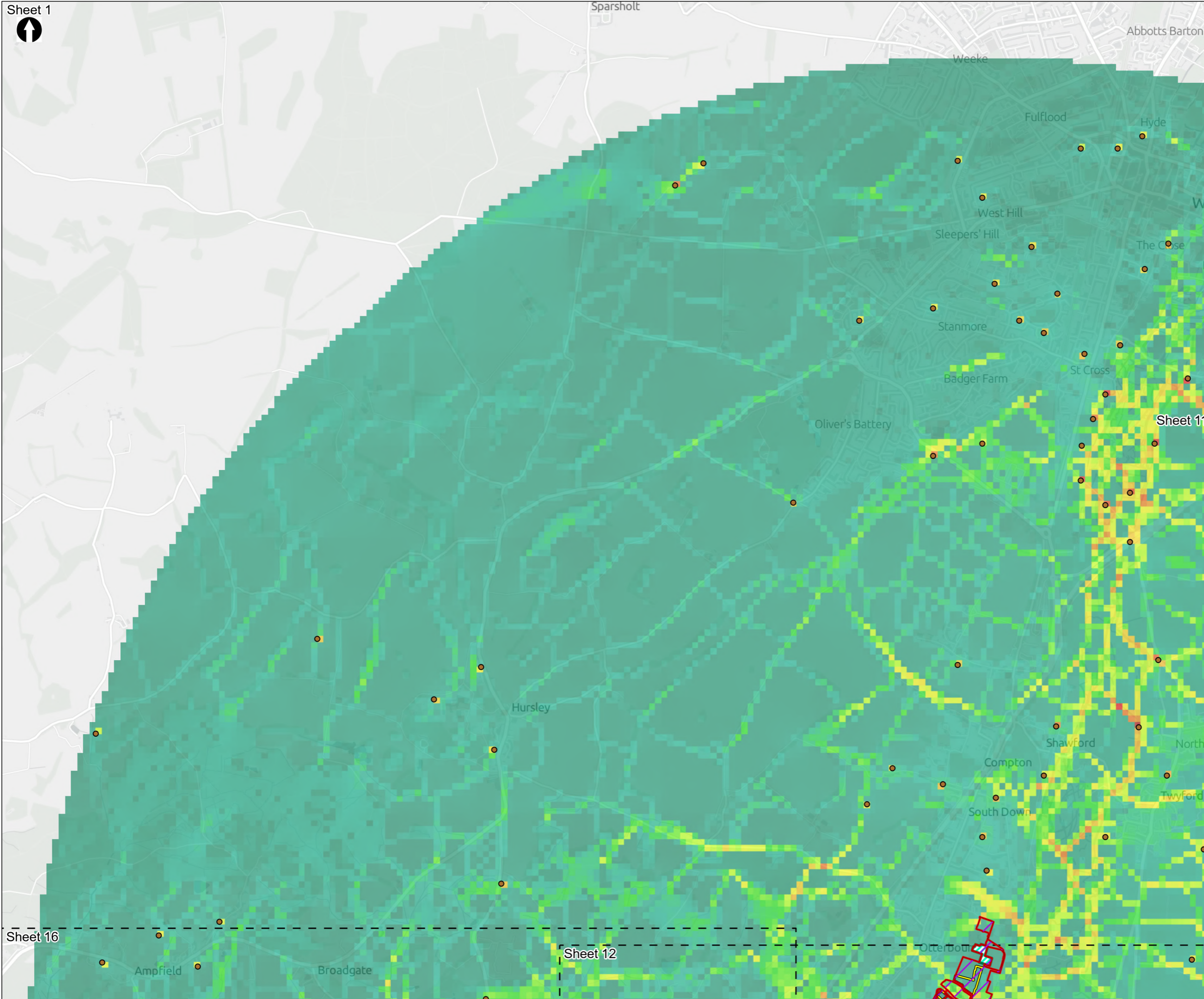
PROJECT TITLE  
 Hampshire Water Transfer and Water Recycling Project



Figure 8.28  
 Habitat suitability modelling output for soprano pipistrelle  
 Sheet 14 of 16

Drawn <b>MW</b>	GIS Checked <b>DL</b>	Checked <b>MP</b>	Approved <b>AK</b>
Scale at A3 <b>1:30,000</b>	Status <b>Final</b>	Revision <b>05</b>	Security <b>STD</b>





- Order Limits
- Sheet Extent Boxes 1:30K
- Construction compounds
- Limits of Deviation for Otterbourne INNS Treatment Plant
- Bat Direct Impact Zone
- Soprano pipistrelle* Observed Presence Locations



Coordinate system: British National Grid; Datum: OSGB 1936  
 Data sources: © Crown copyright and database rights 2026 Ordnance Survey 0100031673. Sources: Esri, TomTom, Garmin, FAO, NOAA, USGS, © OpenStreetMap contributors, and the GIS User Community, Contains OS data © Crown Copyright and database right 2026. Contains data from OS Zoomstack

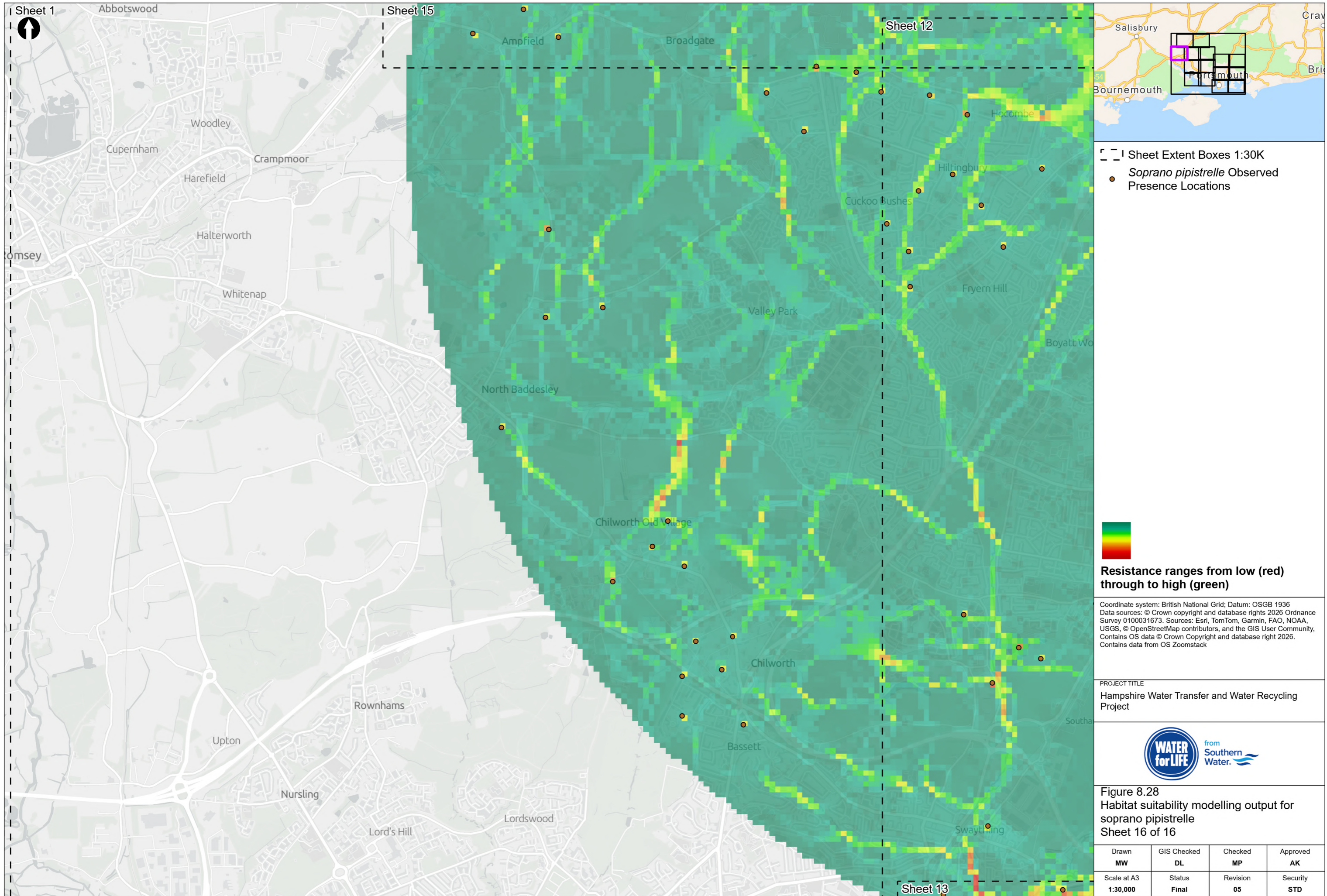
PROJECT TITLE  
 Hampshire Water Transfer and Water Recycling Project



Figure 8.28  
 Habitat suitability modelling output for soprano pipistrelle  
 Sheet 15 of 16

Drawn <b>MW</b>	GIS Checked <b>DL</b>	Checked <b>MP</b>	Approved <b>AK</b>
Scale at A3 <b>1:30,000</b>	Status <b>Final</b>	Revision <b>05</b>	Security <b>STD</b>





Sheet Extent Boxes 1:30K

- Soprano pipistrelle Observed Presence Locations

Resistance ranges from low (red) through to high (green)

Coordinate system: British National Grid; Datum: OSGB 1936  
 Data sources: © Crown copyright and database rights 2026 Ordnance Survey 0100031673. Sources: Esri, TomTom, Garmin, FAO, NOAA, USGS, © OpenStreetMap contributors, and the GIS User Community, Contains OS data © Crown Copyright and database right 2026. Contains data from OS Zoomstack

PROJECT TITLE  
 Hampshire Water Transfer and Water Recycling Project



Figure 8.28  
 Habitat suitability modelling output for soprano pipistrelle  
 Sheet 16 of 16

Drawn <b>MW</b>	GIS Checked <b>DL</b>	Checked <b>MP</b>	Approved <b>AK</b>
Scale at A3 <b>1:30,000</b>	Status <b>Final</b>	Revision <b>05</b>	Security <b>STD</b>

Drawing Number  
**PC5223-RHD-ES-ZZ-D-Z-0053**

